

ASSEMBLY INSTRUCTIONS

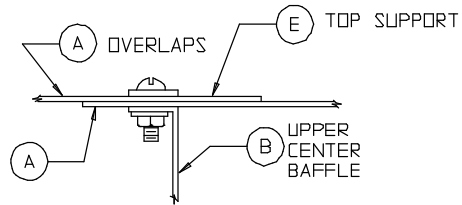
- 1) JOIN TWO (2) TOP INLET PIECES (PART A) UNDERNEATH TOP BRACE (PART E) TO FORM TOP SECTION OF AIR INLET. SEE DETAIL "A". INLET SHOULD MATCH CORNER OF FAN PANEL AT 45° BREAK. REPEAT PRECEDURE FOR BOTTOM EXCEPT PART "A" IS ON TOP OF PART "E". SEE DETAIL "B".

NOTE: HOLES MARKED 1 & 2 ON DRAWING SHOULD BE LEFT OPEN UNTIL COMPLETED CENTER BAFFLE IS IN PLACE.

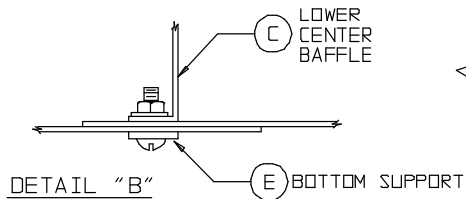
- 2) ASSEMBLE BAFFLE PIECES (PARTS "B" & "C") & SUPPORT (PART "D") TOGETHER TO FORM COMPLETE CENTER BAFFLE. BAFFLE THEN SLIDES INTO PLACE BETWEEN TOP & BOTTOM INLETS (PARTS "A"). SEE DETAIL "A" & "B".

- 3) 1/4" SCREWS & PAL NUTS SUPPLIED FOR AIR INLET.

NOTE:
MOTOR, MOTOR BRACKET,
BLADE ASSEMBLY AND VANE
SECTION REMOVED FOR CLARITY



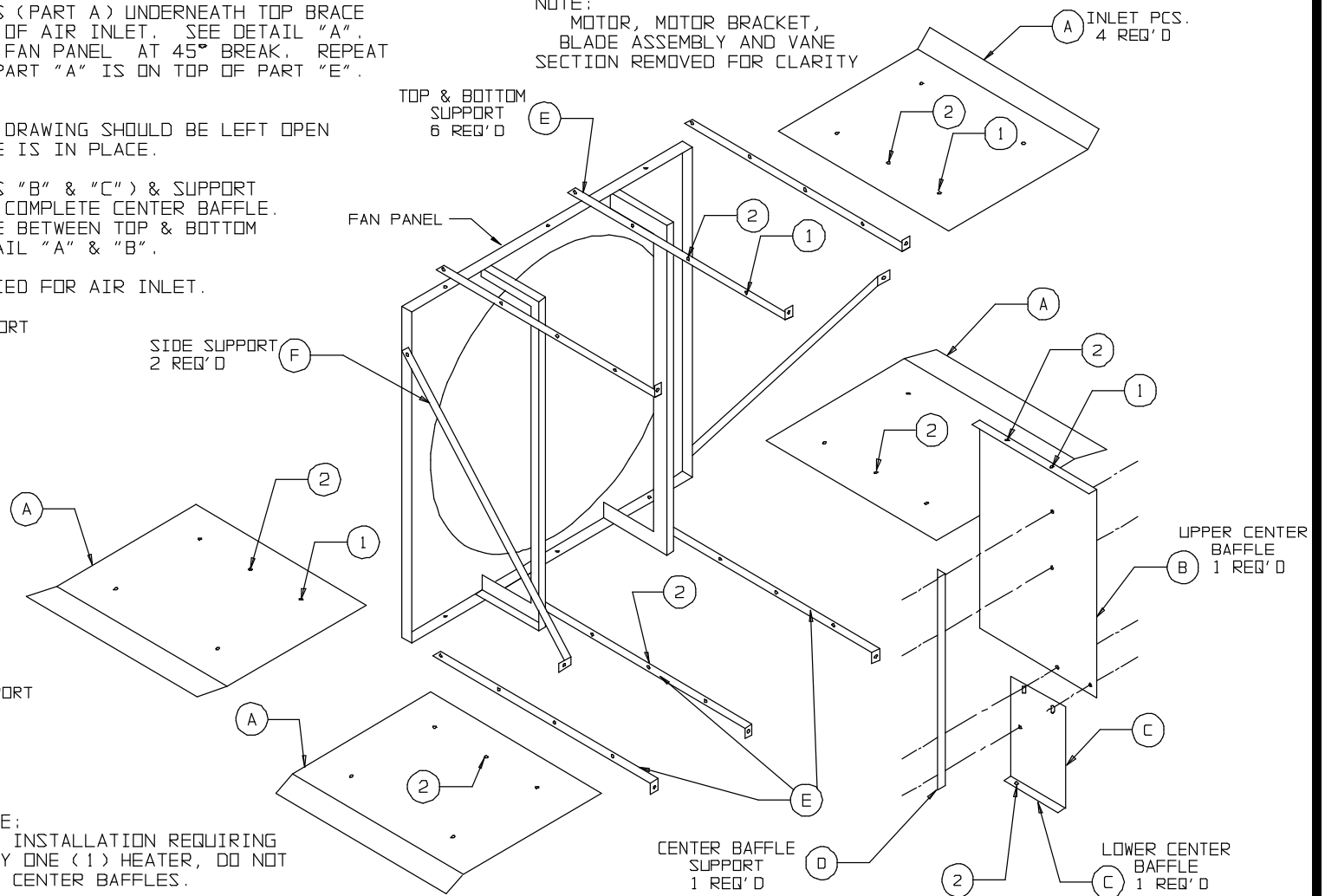
DETAIL "A"



DETAIL "B"

NOTE:
DETAILS "A" & "B"
DRAWN AS VIEWED
FROM BACK OF UNIT.

NOTE:
FOR INSTALLATION REQUIRING
ONLY ONE (1) HEATER, DO NOT
USE CENTER BAFFLES.



1	REVISED AND REDRAWN	SN	5-19-03
NO.	REVISION	BY	DATE
MATERIAL		DO NOT SCALE THIS DRAWING	



DESCRIPTION
ASSEMBLY INSTRUCTIONS
PTF 24 - 30 AIR INLET

DR. SN	CK. _____	APP'D. _____
SCALE NTS	DWG. NO. 401-68	
DATE 5-19-03	SHEET 1 OF 1	